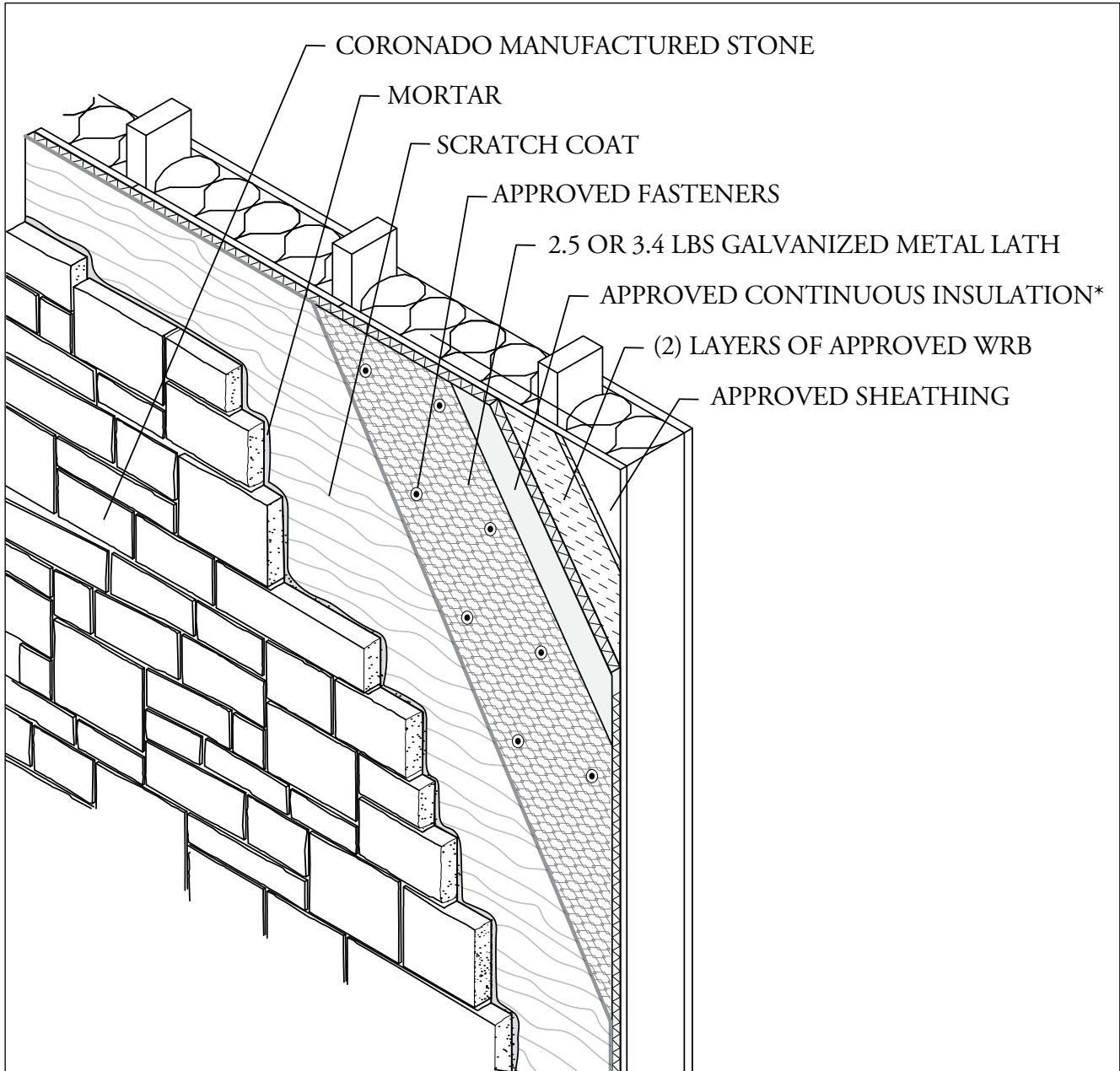




CORONADO[®]
STONE PRODUCTS

INSTALLATION OVER CONTINUOUS RIGID INSULATION (EXTERIOR) (TYPICAL FRAMED CONSTRUCTION)



NOT TO SCALE

***FASTENER REQUIREMENTS:** FOR GUIDANCE WITH LATH FASTENING SYSTEM REFER TO THE FOAM SHEATHING COMMITTEE (FSC) WEBSITE.

BUILDING CODES: CHECK WITH YOUR LOCAL BUILDING AUTHORITIES TO ENSURE THAT YOUR PROJECT COMPLIES WITH ALL STATE AND LOCAL BUILDING CODES.

MORTAR: A POLYMER MODIFIED MORTAR SHOULD BE USED FOR ALL DRY-STACKED APPLICATIONS, INSTALLATIONS IN FREEZE/THAW ENVIRONMENTS AND FOR SOME LARGER/SPECIALTY STONE PRODUCTS.

ADDITIONAL INFORMATION: FOR STANDARD STONE INSTALLATIONS PLEASE REVIEW OUR SURFACE PREPARATION TABLE ON PAGE 4 OF OUR STANDARD STONE INSTALLATION GUIDE.