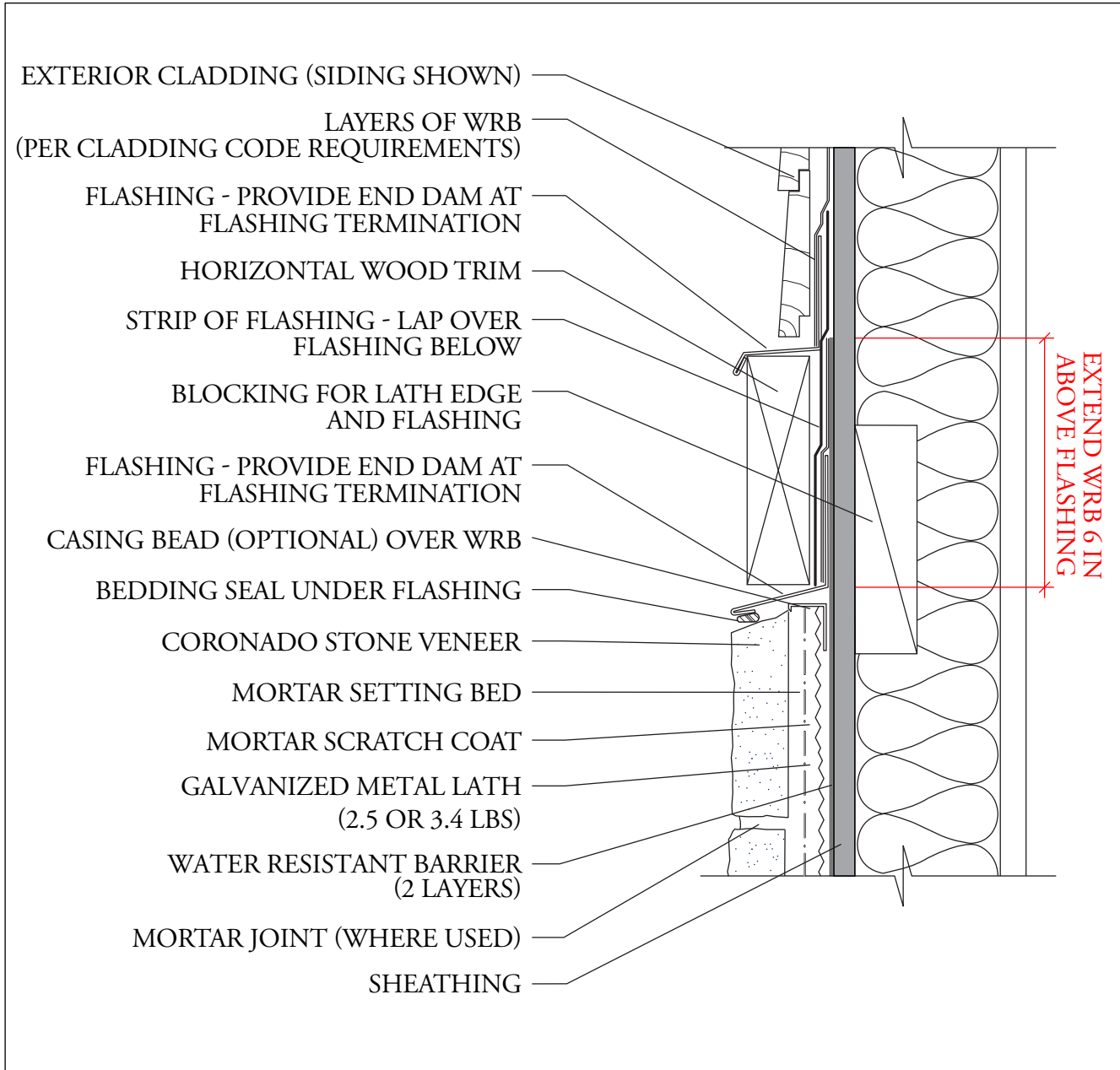




## HORIZONTAL TRANSITION



**NOT TO SCALE**

**BUILDING CODES:** CHECK WITH YOUR LOCAL BUILDING AUTHORITIES TO ENSURE THAT YOUR PROJECT COMPLIES WITH ALL STATE AND LOCAL BUILDING CODES.

**MORTAR:** A POLYMER MODIFIED MORTAR SHOULD BE USED FOR ALL DRY-STACKED APPLICATIONS, INSTALLATIONS IN FREEZE/THAW ENVIRONMENTS AND FOR SOME LARGER/SPECIALTY STONE PRODUCTS.

**ADDITIONAL INFORMATION:** FOR STANDARD STONE INSTALLATIONS PLEASE REVIEW OUR SURFACE PREPARATION TABLE ON PAGE 4 OF OUR STANDARD STONE INSTALLATION GUIDE.