



Freedom Building Stone Installation Guide

For installation guidelines on Coronado Stone Products' Standard Stone, WoodStone, Industrial Ledge, and Classic Series please visit - <https://www.coronado.com/InstallationGuides>



Installing Freedom Building Stone:

Important: A proper footing is required to correctly install Freedom Building Stone. Please check building codes to ensure your entire installation meets all local and national building requirements.

Helpful Tip: In hot, dry or windy weather conditions, dampening of Freedom Building Stone may be needed before installation. This helps reduce excessive wicking of moisture from grout during the curing process. Do not install Freedom Building Stone in temperatures below 40 degrees (Fahrenheit).

Step 1 - Ensure a moisture barrier is properly applied to your substrate before stone installation begins.

Step 2 - Install all required flashing and allow for weep holes at the beginning of the installation. Please see your local building codes for requirements.

Step 3 - A Mason's Line and 6' Level should be used to ensure a straight and level pattern.

Step 4 - Stone should be installed in a horizontal Ashlar Pattern. Do not install stones vertically. Avoid exceeding the height of the largest stone for vertical joints and 6' in length for horizontal joints. Blend the stone on the wall from several different boxes to ensure proper color and size variation. Provide a minimum overlap of 2" for each stone.

Helpful Tip: Using a complementary grout color can dramatically change the overall appearance of your project.

Step 5 - Please ensure full and even head joints during the installation process to allow for proper tooling.

Step 6 - Stones should alternate (face to edge) and overlap approximately 3" when installed around corners.

Step 7 - If cutting or shaping of stone is required, it can be easily accomplished with a Masonry Hammer or Power Saw w/ Masonry Blade. Please wear safety glasses and a NIOSH approved dust mask during the cutting process.

Step 8 - Non-corrosive wall ties should be installed to architectural specifications and must comply with all local and national building codes.

Step 9 - Tool the joints once the grout becomes thumb print firm. Clean any excess grout from the face of the stone with a whisk broom. A clean grout sponge can be used to remove any remaining grout haze or residue.

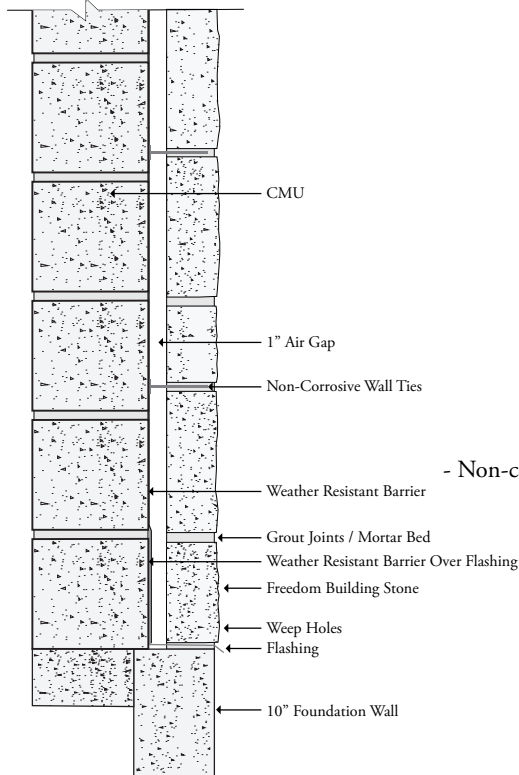
Step 10 - Sealing your project is not required, but it is recommended to help protect the stone against harsh weather. Only breathable penetrating water-based silane sealers should be used following the manufacturers specifications during all applications.

Important: Check building codes to see if control or expansion joints are required for your installation.

Recommended Masonry Cement Mixture:

- 3 parts clean sharp masonry sand
 - 1 part type N or S masonry cement
 - Add water to achieve proper consistency
-

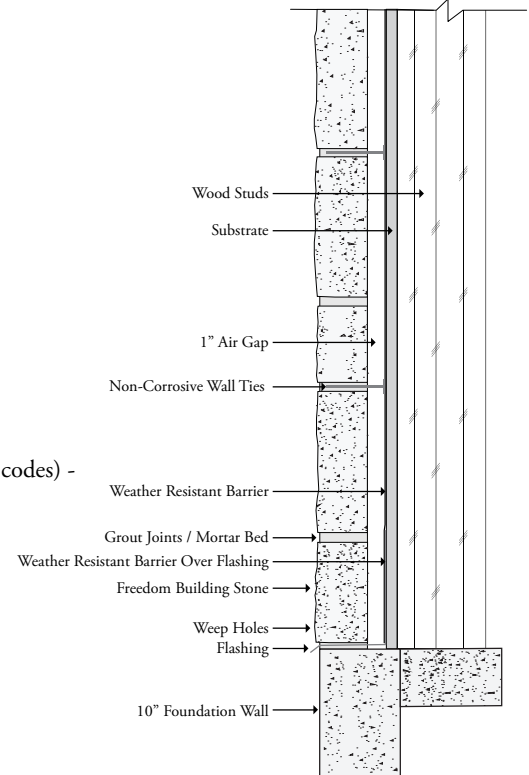
Typical CMU Construction



Tools & Supplies Needed:

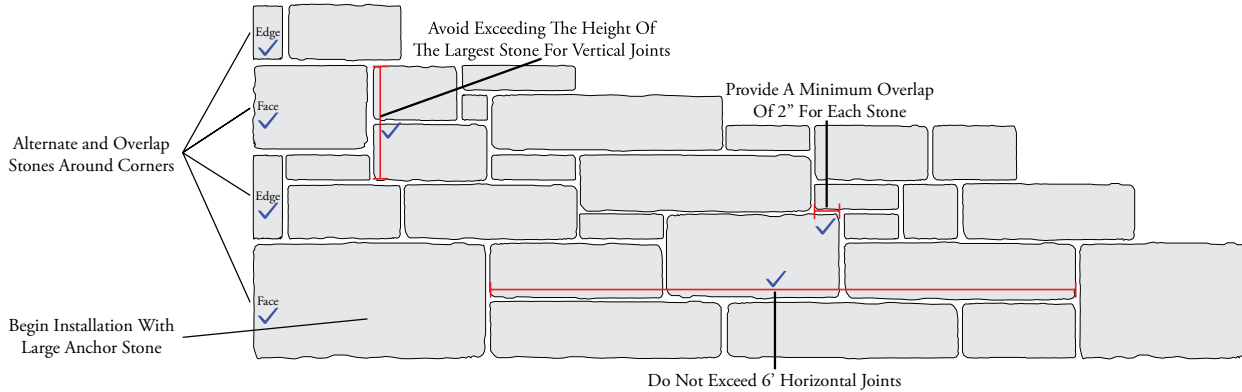
- Safety Glasses -
- Niosh Approved Dust Mask -
- Mason's Line -
- Trowel -
- 6' Level -
- Masonry Hammer -
- Power Saw w/ Masonry Blade -
- Drill with a Mortar-Mixing Paddle -
- Jointing Tool -
- Soft Bristle Brush -
- Type N or S Cement -
- Masonry Sand -
- Non-corrosive Wall Ties (check local building codes) -

Typical Wood Frame Construction



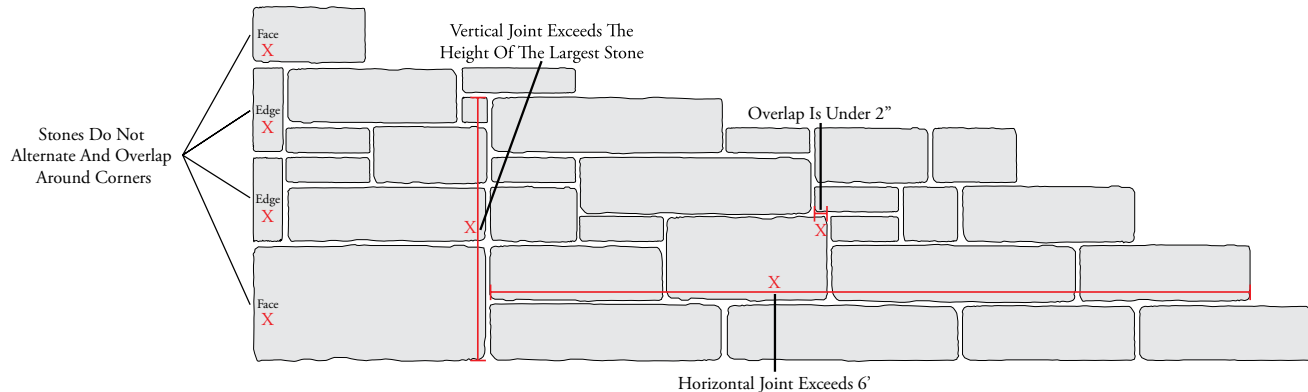
Correct

Freedom Building Stone Installation



Incorrect

Freedom Building Stone Installation





Freedom Building Stone - Providence



Freedom Building Stone - Texas Cream